



VENTEC BLADE

ROOF AND FACADE VENT

IDEAL FOR: STAIRWELLS AND SMOKE SHAFTS

24 HR NEXT DAY
DESPATCH

400 SERIES
COMPATIBLE

24
VOLT



Natural Smoke Ventilator

The Ventec Blade is an automatic multi-bladed smoke exhaust louvre designed with the primary function of dispersing smoke, fumes, and heat from inside buildings to the outside. It comes in a standard sizes allowing 1m² or 1.5m² Geometric Free Area - bespoke sizes available on request. Fitted with a 24Vdc actuator. Approved Document L compliant and BS EN 12101-2 certified.

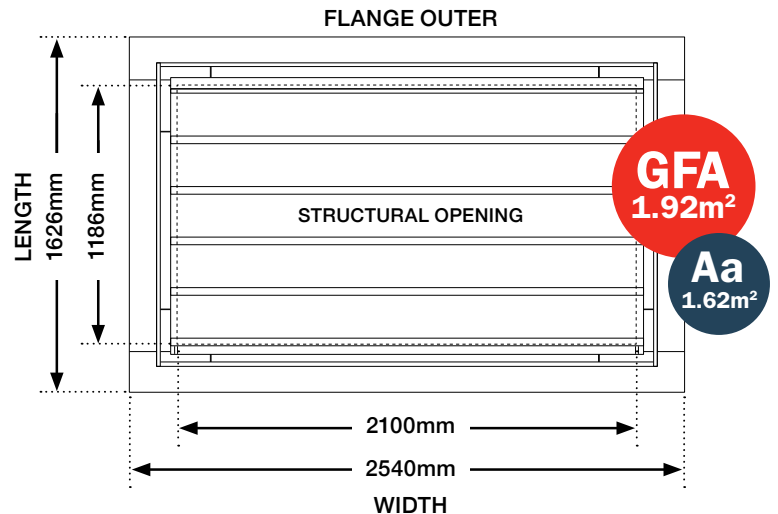
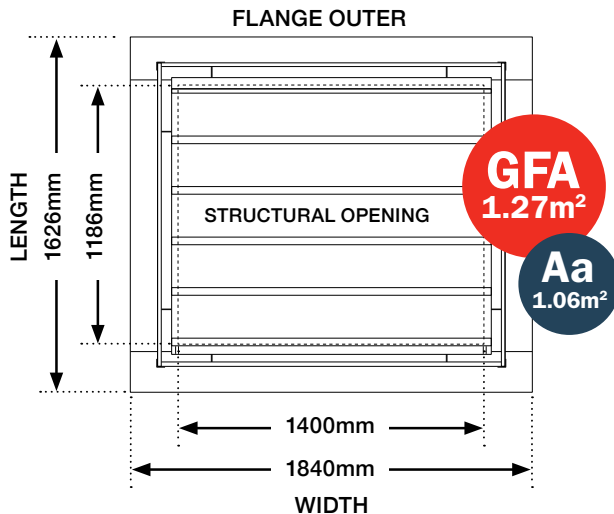
Each unit is supplied preassembled. Flange options are available enabling installation on various types of roofing and facades. For vertical facade mounting a rain shield or structural canopy is recommended.



STANDARD SIZE – BESPOKE SIZES AVAILABLE			
Structural Opening Width x Length	GFA (m ²)	Aa (m ²)	Current (amps)
1400mm x 1186mm	1.27	1.06	1.0
2100mm x 1186mm	1.92	1.62	1.0

Dimensions (standard sizes)

- When ordering, Ventec Blade sizes are based on structural opening dimensions



VENTEC BLADE ROOF AND FACADE VENT



Technical Data (standard sizes)

	1.27m ² GFA / 1.06m ² Aa	1.92m ² GFA / 1.62m ² Aa
Structural Opening Dimensions	1400mm (W) x 1186mm (L)	2100mm (W) x 1186mm (L)
Certification	BS EN 12101-2	BS EN 12101-2
Compliance	Approved Document L	Approved Document L
Voltage	24Vdc	24Vdc
Current Consumption	1.0 amps	1.0 amps
Number Of Blades	5	5
Snow Load	SL 250	SL 250
Wind Load	WL 1500	WL 1500
Ambient Operating Temperature	-25°C to +70°C	-25°C to +70°C
Resistance Temperature High	B 300 resistance to 300°C	B 300 resistance to 300°C
Vent Fire Class	E	E
Operational Reliability	Re 300	Re 300
Dual Purpose Reliability	Re 10000	Re 10000
Opening Time	< 60 seconds	< 60 seconds
Base and Blade Material	Aluminium	Aluminium
Base and Blade Insulation	Mineral Wool	Mineral Wool
Weight	70 kg	100 kg
Number Of Cores	2 Core + Earth	2 Core + Earth

Blade Options*



STANDARD BLADE MATERIAL
Aluminium with Mineral Wool insulation

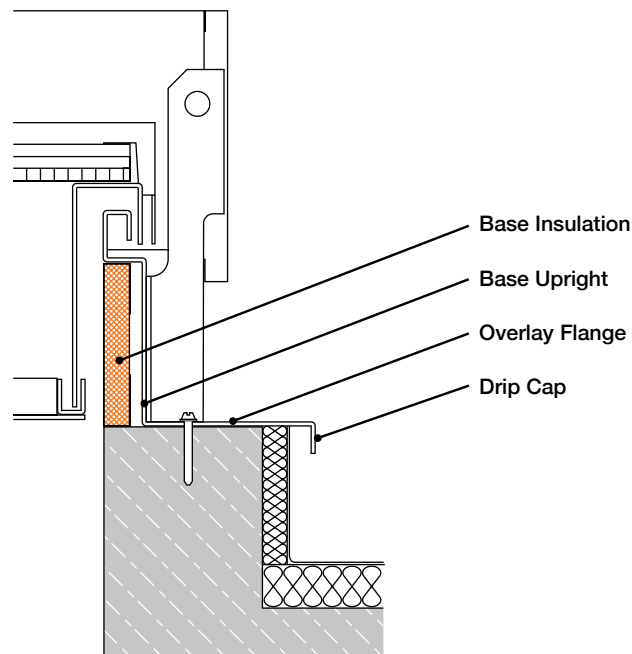
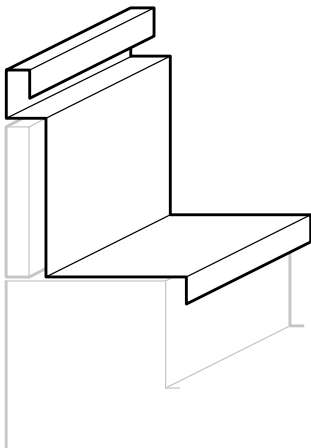
NON-STANDARD BLADE OPTIONS

Clear Polycarbonate 16mm
Opal Polycarbonate 16mm
Clear Polycarbonate 25mm
Opal Polycarbonate 25mm

*Blade material may affect technical data stated

Flange Details

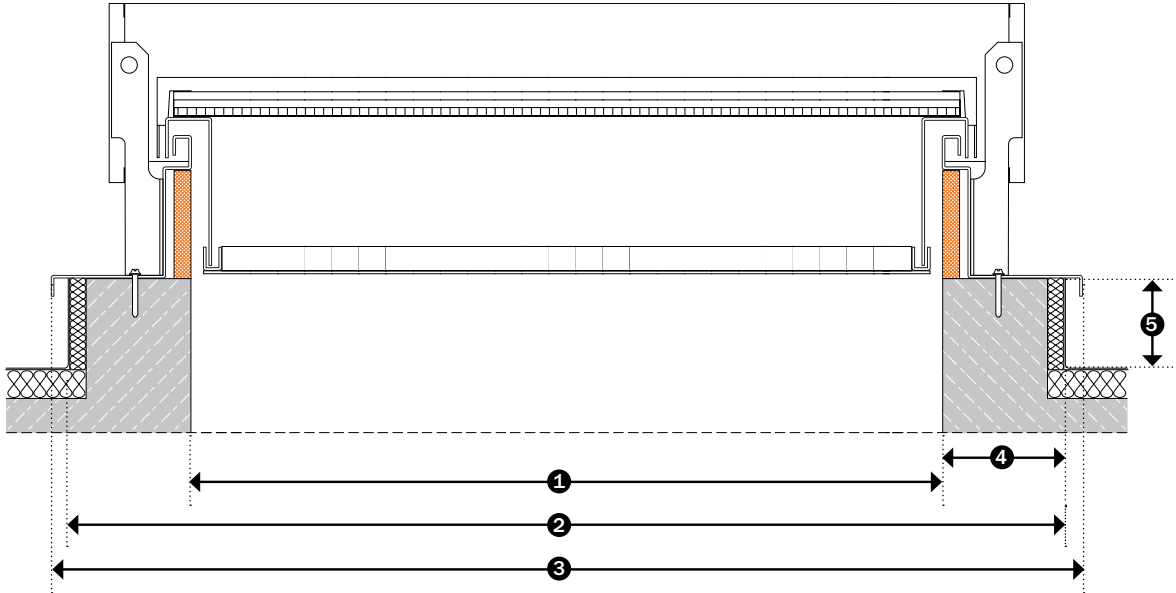
220mm overlay flange with a 40mm drip cap to be installed on a finished upstand.
Bespoke flange profile and width options are available on request.



VENTEC BLADE ROOF AND FACADE VENT

Upstand Requirements

- A 200mm thickness all round, finished upstand is required to accommodate a Ventec Blade. Weathering by others.

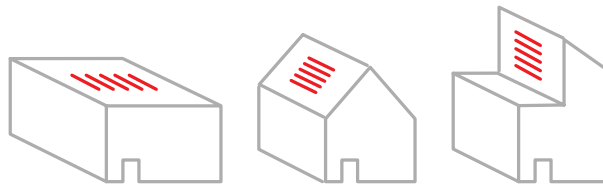


STANDARD SIZES

	1. Structural Opening	2. External Upstand (Max.)	3. Overlay Flange Outer	4. Upstand Thickness	5. Upstand height
1.27m ² GFA / 1.06m ² Aa	1400 (W) x 1186 (L)	1800 (W) x 1586 (L)	1840 (W) x 1626 (L)	200 (Max.) all round	150 (Min.)
1.92m ² GFA / 1.62m ² Aa	2100 (W) x 1186 (L)	2500 (W) x 1586 (L)	2540 (W) x 1626 (L)	200 (Max.) all round	150 (Min.)

Blade Orientation

- Blade axis to remain horizontal in all installations
- Roof pitch may affect technical data stated



Maintenance

It is important to maintain this product as per the manufacturers instructions. If you require assistance with any aspect of installation, commissioning or maintenance please contact our customer support care today.

Related Products and Services

The following should also be considered when planning your system.



INSTALLATION
& MAINTENANCE



PROJECT
COMMISSIONING