



24 HR NEXT DAY
 DESPATCH

✓ **SMOKE**
 VENTILATION

✓ **ENVIRO**
 VENTILATION

✓ **24V**
 POWER INPUT

✓ **400 Series**
 COMPATIBLE

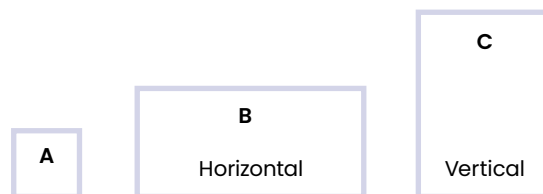
✓ **O Range**
 COMPATIBLE

✓ **1000-G**
 COMPATIBLE

About This Product

The Ventec Elite bottom hung outward opening window system, supplied with fire rated glass and gaskets is ideal for stairwells, lobbies and corridors. 50mm triple glazing as standard can achieve a U-value as low as 0.8 Wm² K. It is suitable for use in smoke ventilation systems, or for environmental ventilation, via a manual switch or by automated opening. The universal design allows single or multiple units to be fitted to most facade systems or wall types.

Nominal Sizes Available*



A	Minimum nominal size	800mm x 800mm
B	Maximum nominal size – horizontal arrangement	2700mm(W) x 1300mm(H)
C	Maximum nominal size – vertical arrangement	1600mm(W) x 2200mm(H)

* Smaller and larger sizes are available, but they may not be compliant with BS EN12101 UK Smoke Standards.

Technical Data (standard sizes)

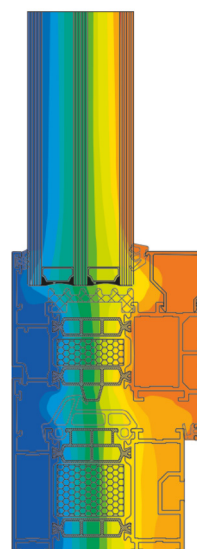
	Ventec Elite
Geometric Free Area	0.22m ² - 2.63 m ²
Certification	BS EN12101-2
Vent Opening Angle Options	30°, 45°, 60°, 75°
Opening Direction	Outward
Orientation	Bottom hinged
Power Input	24Vdc
Current Consumed	2.0 - 5.2 amps
Colour Options	RAL palette
Glazing Options	Double or triple-glazed
Actuator Type Options	Spindle
Reliability – Smoke Extraction	Re 1000
Reliability – Daily Ventilation	Re 10000
Opening Time	< 60 seconds
Snow Load	SL 0
Wind Load	WL 1000 > WL 1500
Operating Temperature Low	T(0°C)
Resistance Temperature High	B 300 resistance to 300°C
No. Of Cable Cores	2 Core + Earth

Vent Engineering advises that the design, supply, and installation of all electrical wiring be carried out in accordance with current standards.

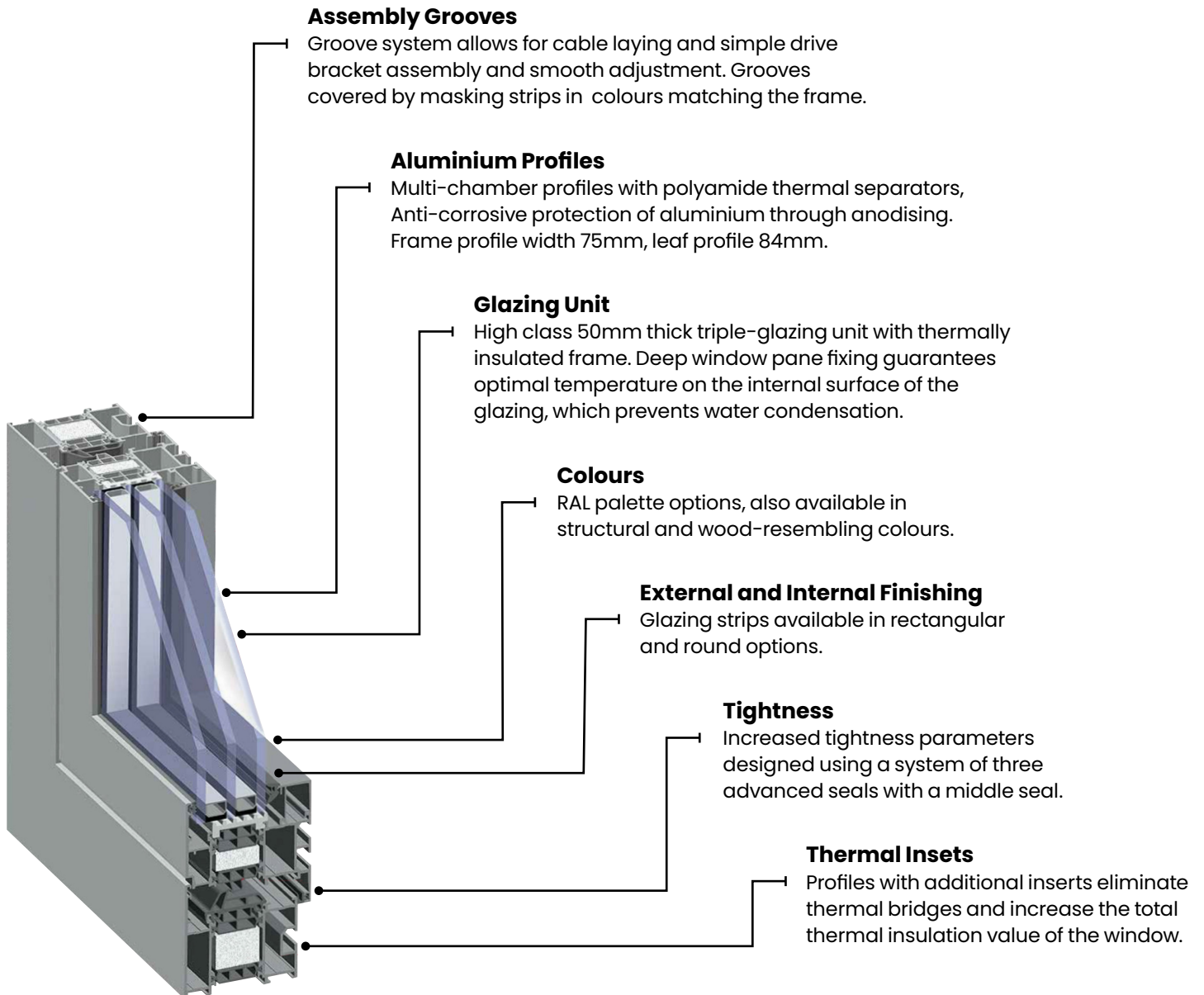
Energy Efficiency

An optimal isotherm pattern in the Ventec Elite has been achieved using the most efficient arrangement of aluminium profile chambers equipped with polyimide separators, multi-surface seal system and application of additional thermal inserts.

Thanks to deep window pane fixing in the leaf profile, and application of additional thermal inserts in the leaf and frame, we have eliminated water condensation on the internal side of the window.



Product Highlights

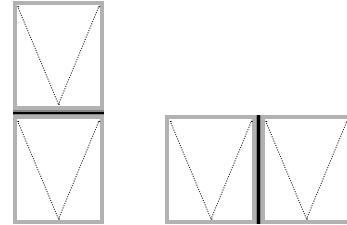


Decorative Glazing Options

- Decorative bars sympathetic to the style of older architecture:
 - Internal and External - glued to the glazing unit both inside and outside
 - Internal only - placed inside the glazing unit
- Glazing bars - dividing the glass into many smaller formats

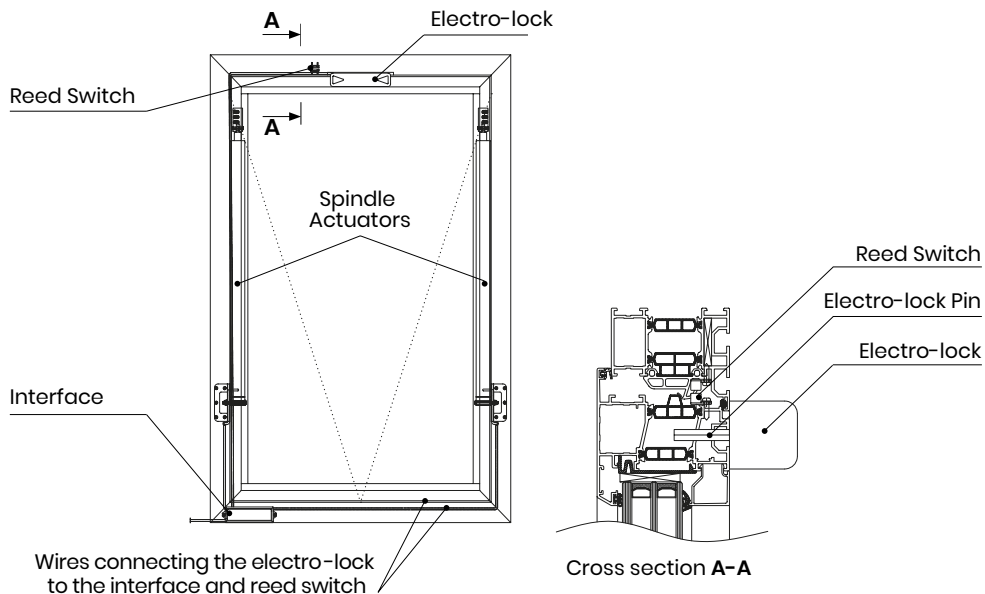
Adjacent Unit Installation

Vertical or horizontal 'stacking' of multiple Ventec Elite windows is achievable by using a connecting bar and thermal inserts, which are then silicon sealed. Further details available on request.



Electro-Lock

Electro-lock is required on larger units. It guarantees resistance of the windows leaf against wind load and makes the window more secure giving resistance to unauthorised access. 24Vdc, 1.0 Amp.



Smoke ventilation systems require regular testing and record-keeping by authorised, competent persons.



...by "Accredited" and "certified smoke vent engineers only"

*REFERENCE:
DAME JUDITH HACKITT REPORT



Related Products and Services

The following should also be considered when planning your system.

